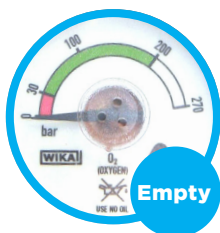


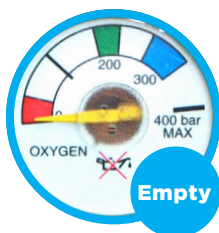
Recovery Oxygen Cylinder Durations



Freedom® 400



B10



Flow rate (lpm)	Approximate Duration
0.5	14 hours 20 mins
1	7 hours 10 mins
1.5	n/a
2	3 hours 35 mins
3	2 hours 23 mins
4	1 hour 47 mins
6	1 hour 11 mins
8	53 mins
10	43 mins
15	28 mins

Flow rate (lpm)	Approximate Duration
0.5	70 hours 44 mins
1	35 hours 22 mins
1.5	23 hours 34 mins
2	17 hours 41 mins
3	11 hours 47 mins
4	8 hours 50 mins
6	5 hours 53 mins
8	4 hours 25 mins
15	2 hours 21 mins